



Let's get you connected

How to use your voucher to connect to
the internet with BT Wi-Fi.

How to get online

Have access to a mobile?

If so, text SCHOOL to 81192 and we'll send you an online version of this guide direct to your phone.


Your device needs to connect to a BT Wi-Fi network before you can use the internet.

Follow these simple steps to get online – and don't forget to log out when you've finished.

Make sure your device is plugged in – or charged up – and your device's wi-fi is turned on.

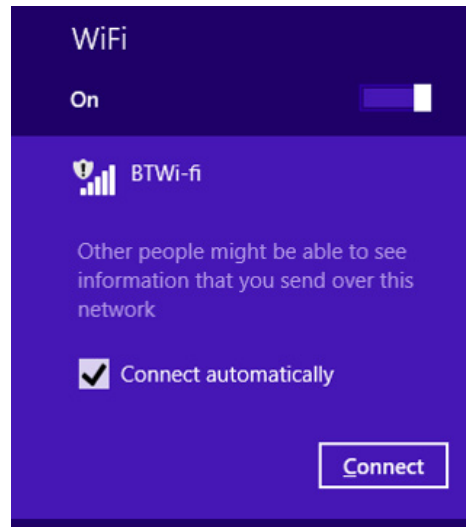


1

Click on the wi-fi icon 

Select **BTWi-fi** or **_BTWi-fi** from the list of available networks, and click **Connect**.

TIP You can tick **Connect automatically** to save you repeating this step next time.



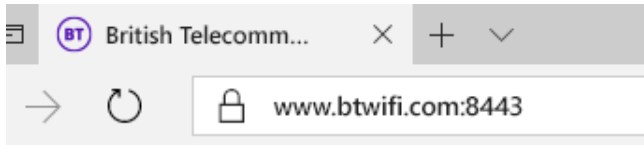
If you **can't** see a 'BT Wi-fi' option in the list, move to another room and try again.

If you still can't see a 'BT Wi-fi' option, sorry, but that means you don't have wi-fi coverage and this voucher won't work. Speak to the person who gave you the voucher.

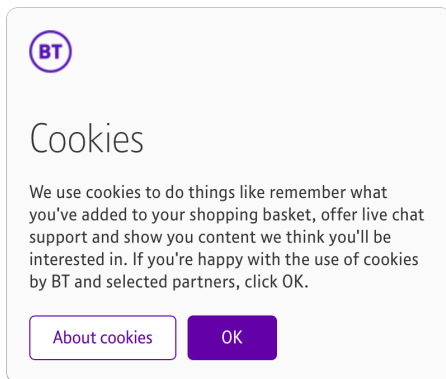
2


Open an internet browser 

Type **www.btwifi.com:8443** in the address bar and press Enter.



When the page loads, click **OK** to accept cookies.

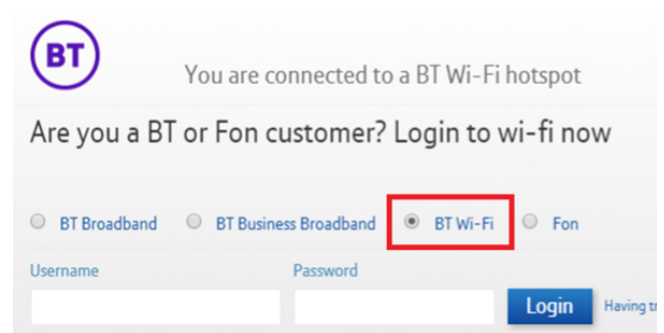


TIP Click the  icon in the address bar to add this page to your favourites or bookmarks, so you can easily find it again.

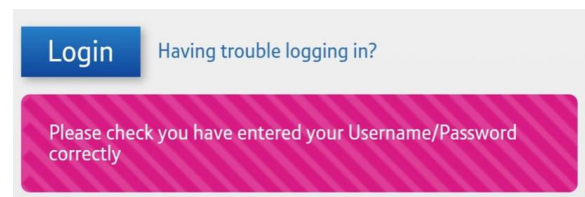
3

You'll see a page with prices on, but you can ignore these as your internet access is free.

- Select **BT Wi-Fi** (as in the picture below).
- Enter the username and password from your BT Wi-Fi voucher.
- Click **Login**.



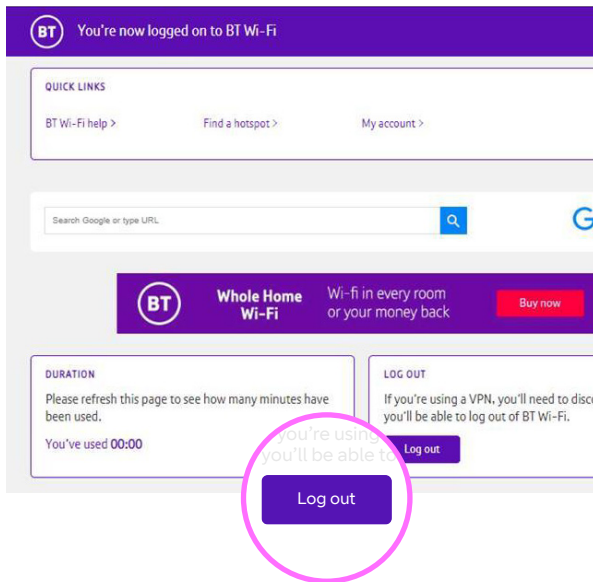
TIP If you've entered your details correctly a few times, but still see an error message like this, please ask for a new voucher.



4

It's important to log off BT Wi-Fi each time you've finished on the internet.

Go back to the page where you logged in and click on **Log out**.



TIP If you've accidentally closed the log-in page, just open it again at **www.btwifi.com:8443**

Need some help?

If you want any extra help connecting, text **SCHOOL** to **81192** and we'll send you a step-by-step guide.

If you've lost your voucher details, ask the person who gave it to you, and they'll be able to help.

Need any other technical help with your BT Wi-Fi voucher? It's free to call us from 8am until 8pm on 0800 587 9983 seven days a week.

Useful Links

BT's Skills for Tomorrow site has lots of free courses and support for families, parents and children to help you stay safe online and get the most out of the internet.

www.bt.com/skillsfortomorrow

Our partners, Internet Matters, have lots of information about how to stay safe online and we recommend you take a look before you get started.

www.internetmatters.org

Why not try our fun and educational interactive games and activities for primary age kids that help them learn digital skills?

www.bt.com/skillsfortomorrow/home-life?

Here are BT's Terms and Conditions

Just to let know, when you use your voucher you are accepting BT's terms and conditions of use, and you can read them by clicking on these links:

btwifi.co.uk/terms-and-conditions/acceptable-use-policy

btwifi.co.uk/terms-and-conditions/fair-use-policy/

How BT looks after your Privacy

BT is committed to your privacy around how we use your data.

For the purpose of this service, you will not be asked to provide any personal data as part of the sign-up process, however we will collect and monitor information in relation to how our users use the network in order to allow us to manage the service. This will include collecting information to help us maintain the network and ensure it remains accessible to you and our other users.

We may also monitor how the network is being used to protect you, our other users and other people accessing the internet generally and to check whether our acceptable and fair use policies are being adhered to. It is important to know that where our network is used to commit criminal offences or where a user is suspected to have committed certain criminal activities we may have an obligation to report those activities and/or share the data we collect with law enforcement agencies and other judicial authorities. We will only share this data where it is lawful to do so or where we are required by law to share that data.

For more information on how we use your data, you can read our Privacy Policy at bt.com/privacy-policy